



ART ENTRY REQUIREMENTS GRADES 7-8

13 winning artwork entries will be featured in the
2027 LifeWorks Ohio calendar.

TO VIEW RECENT WINNING ARTWORK ONLINE:

www.lifeworksohio.org

CLICK ON THE ART, ESSAY & POETRY CONTEST TAB
SCROLL DOWN TO RECENT CALENDAR ARTWORK.

HAND-DRAWN ART SIZE: 8.5 x 11, landscape orientation

MUST be original; no tracing.

Dark or vivid colors are preferred; pastels may fade during printing.

DIGITAL ART SIZE: 8.5 x 11, landscape orientation

Must be original work, with no copyright.

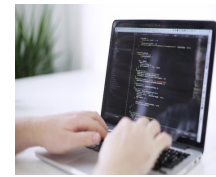
Students may use public domain/free sites.

THIS BIBLE VERSE AND CITATION MUST APPEAR
WITHIN THE ARTWORK; PLEASE DO NOT INCLUDE
OTHER BIBLE VERSES:

**“As each one has received a gift, use it to
serve one another . . .” 1 Peter 4:10**

Students **MUST** depict **PEOPLE** using their talents and
abilities (gifts from God) to serve one or more of these:

- * Expectant mother and preborn child
- * Child waiting to be adopted or parents who are
adopting a child
- * People who are physically or mentally challenged
- * People who are terminally ill



ESSAY ENTRY REQUIREMENTS GRADES 7-8

THIS BIBLE VERSE AND CITATION MUST APPEAR AS
THE TITLE OF THE ESSAY AND ITS THEME;

**“As each one has received a gift, use it to
serve one another . . .” 1 Peter 4:10**

500-550 words Correct spelling and punctuation, please.

IF YOU MENTION FACTS , SCIENCE, OR STATISTICS IN YOUR
ESSAY, PLEASE INDICATE THE SOURCE, IN PARENTHESES, AFTER
THE STATEMENT.

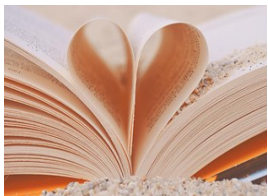
PLEASE AVOID WEBSITES WHICH PROMOTE ‘PRO-CHOICE,’
‘REPRODUCTIVE RIGHTS,’ ‘MEDICAL AID IN DYING,’ ‘DEATH WITH
DIGNITY,’ ETC. PLEASE CALL US, AND WE WILL BE HAPPY TO
REVIEW ANY WEBSITE’S CONTENT WITH YOU.

STUDENTS MAY WRITE ABOUT ONE OR MORE OF THE FOLLOWING
LIFE ISSUES AND THE PEOPLE INVOLVED. ACTUAL PERSONS
(NOT FICTIONAL) MAY BE MENTIONED IN THEIR ESSAY.

**STUDENTS MUST DISCUSS THE MORALITY OF THE LIFE
ISSUE AND HOW THEY CAN BEST USE THEIR “GIFTS” -
TALENTS AND ABILITIES - TO SERVE THOSE AFFECTED.**

- * Abortion - Mothers in unexpected pregnancies
- * Embryonic stem cell research - Human embryos
- Adult stem cell research with its successful treatments
- * Abortion - Adoptive children and their parents
- * Assisted suicide - The physically or mentally challenged
- * Euthanasia - The terminally or chronically ill

Poetry →



POETRY ENTRY REQUIREMENTS

GRADES 7-8

THIS BIBLE VERSE AND CITATION MUST APPEAR AS
THE TITLE OF THE POEM. PLEASE DO NOT INCLUDE
OTHER BIBLE VERSES:

**“As each one has received a gift, use it
to serve one another ...”**

1 Peter 4:10

Poem should be 14-16 lines; students may choose
their poetry style.

Students **MUST** write about one or more of the
people listed below and may mention actual
persons (not fictional) who have inspired them.

Details such as these may be included:

- Each person's challenges and hopes
 - How their faith helps them
- How others could use their “gifts” (abilities
and talents) to serve them
- * A mother in an unexpected pregnancy and her
preborn child
- * Child waiting to be adopted and
those who adopt children
- * People who are physically or mentally challenged
 - * People who are terminally or chronically ill



Educating the Next Generation with the Truth About Life

LifeWorks Ohio 2026 “Respect Life” Art, Essay & Poetry Contest

**GRADES 7-8 POSTMARK DEADLINE IS
SATURDAY, MARCH 7, 2026**

Cash Prizes: 1st Place-\$60 2nd Place-\$35 3rd Place-\$25
Honorable Mention-\$15

There may be multiple winners in each “place.”

STUDENTS MAY SUBMIT ENTRIES FOR MORE THAN ONE CATEGORY.

QUESTIONS: 216-661-6616

* PLEASE KEEP A COPY OF YOUR ENTRY,
OR SAVE IT ON YOUR COMPUTER. *

ENTRIES WILL BE DISQUALIFIED FOR PLAGIARISM
(COPYING FROM ANY SOURCE).

These details MUST be included on the BACK OF ARTWORK
and on the FRONT OF ESSAY OR POEM. PLEASE PRINT NEATLY:

Student name & grade School name & address

Teacher's and Principal's names and e-mails

Home School parent's name, phone, and e-mail

Essay: Word Count

Poetry: Line Count

Mail entries to: LifeWorks Ohio 4429 State Road, Suite 23
Cleveland, OH 44109

If hand-delivering entries, please phone 216-661-6616 in advance.

All entries become the property of LifeWorks Ohio and may be used in promotional
materials, on the website, etc. Contest judging criteria and results are confidential.